

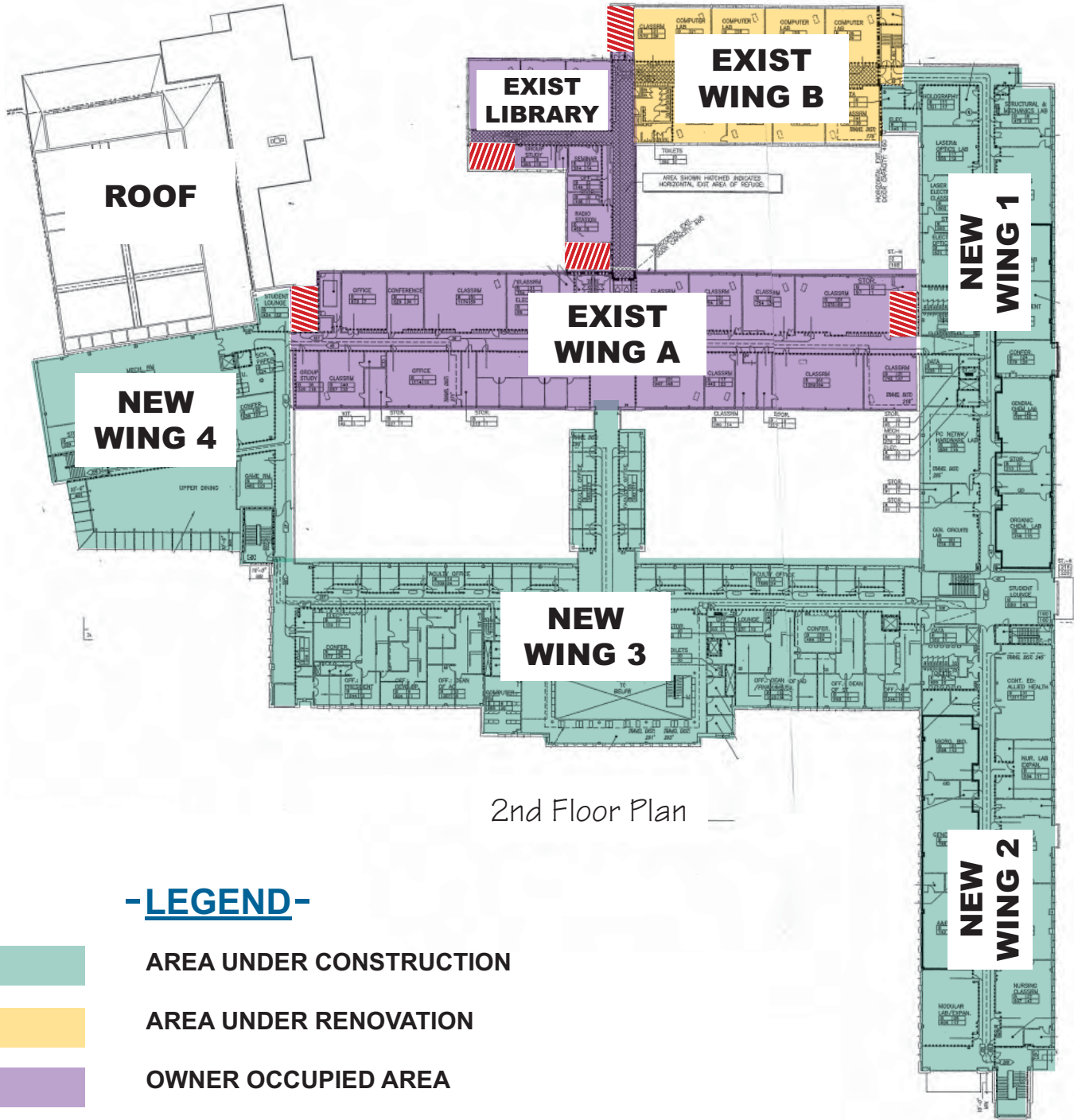
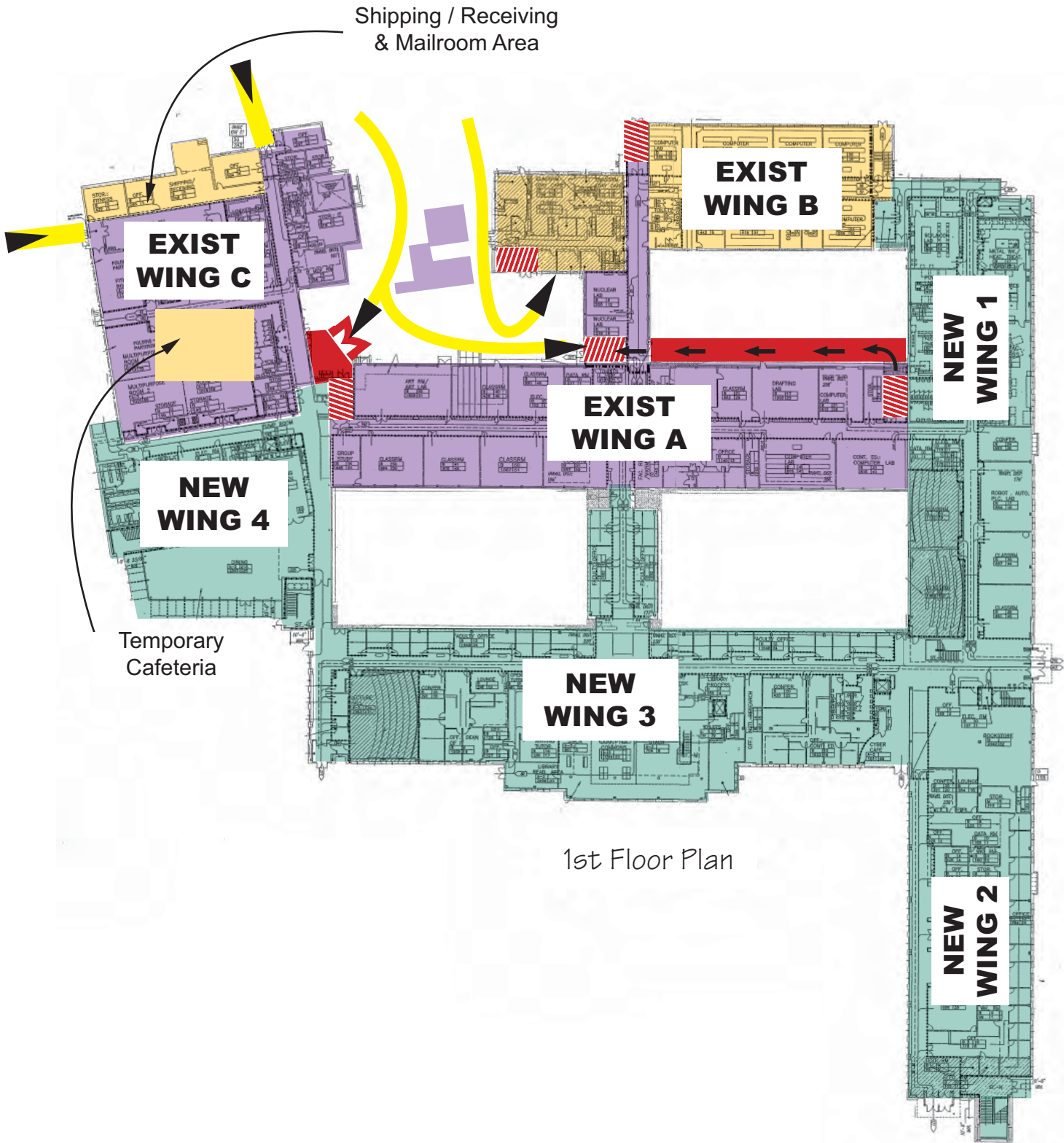
APPENDIX A

Construction Schedule (shown in months)

Note: Durations shown are based on 5 working days per week

— 250 —

SKANSKA THREE RIVERS
COMMUNITY COLLEGE

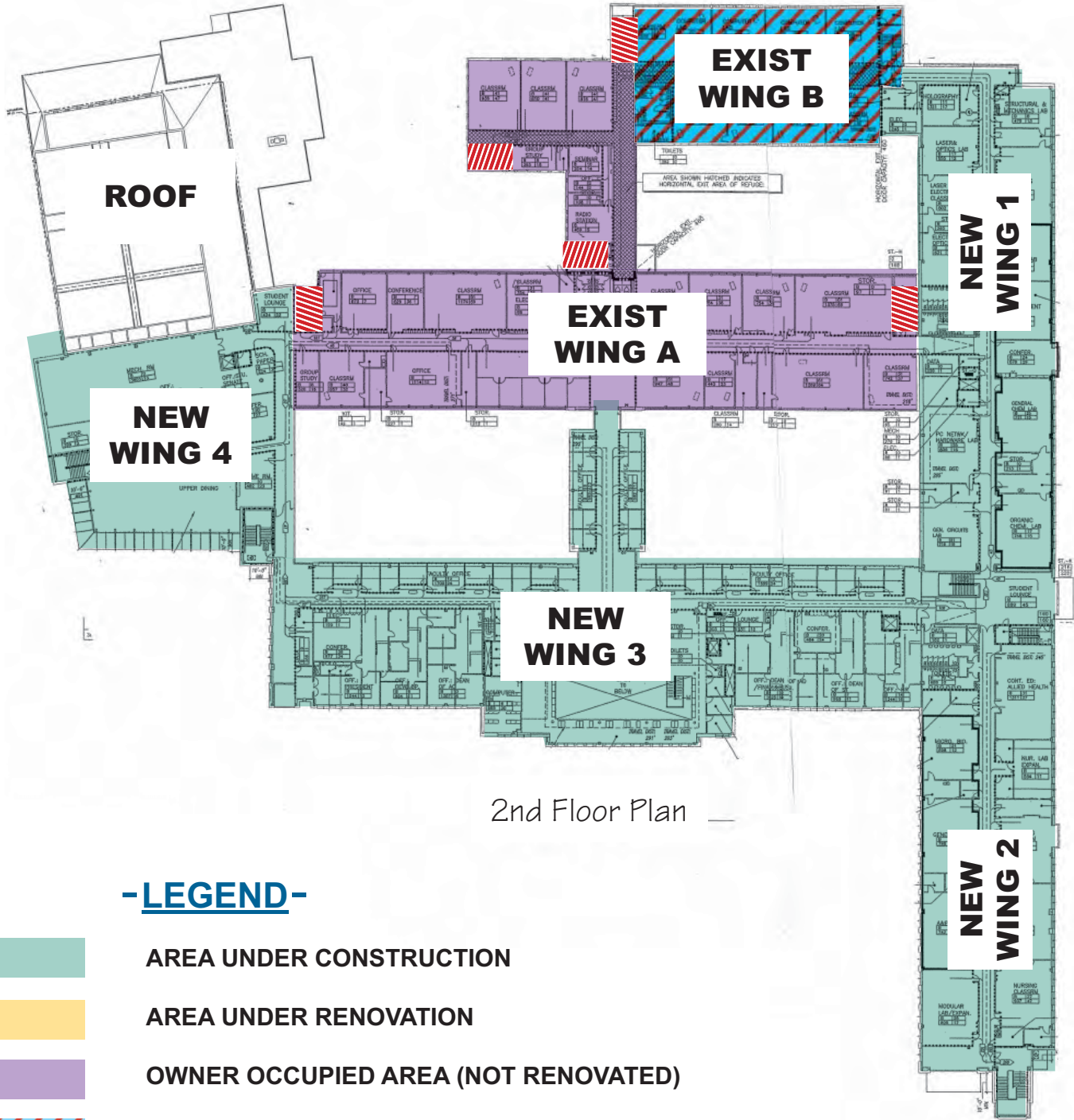
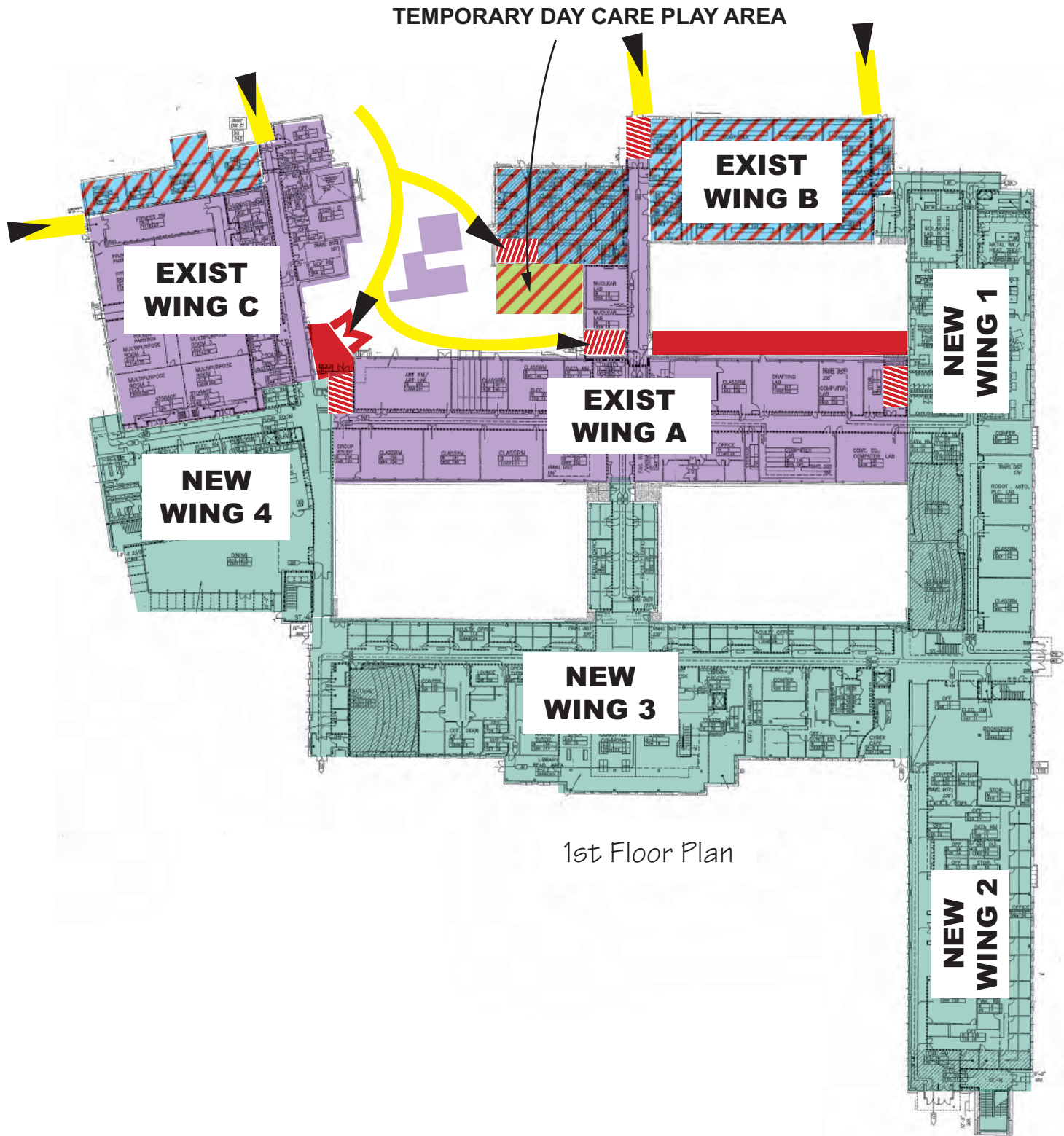


-LEGEND-

- AREA UNDER CONSTRUCTION
- AREA UNDER RENOVATION
- OWNER OCCUPIED AREA
- ACCESS / EGRESS PATH
- POINT OF ACCESS / EGRESS
- STAIRWELL
- TEMP ENCLOSURE / WEATHER TIGHT

Phase 1
Interior Logistics Plan
(243 Calendar Days)

SKANSKA THREE RIVERS
COMMUNITY COLLEGE

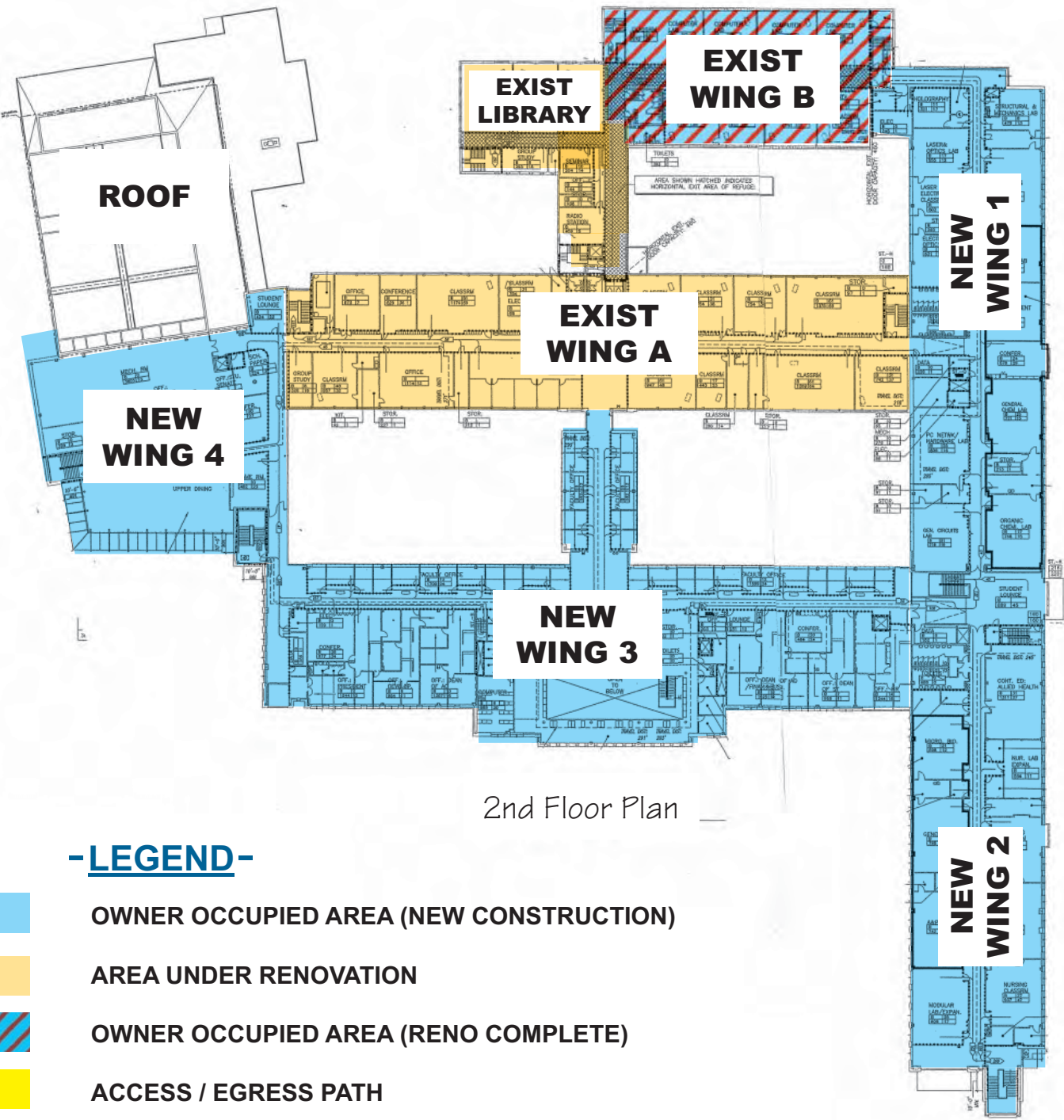
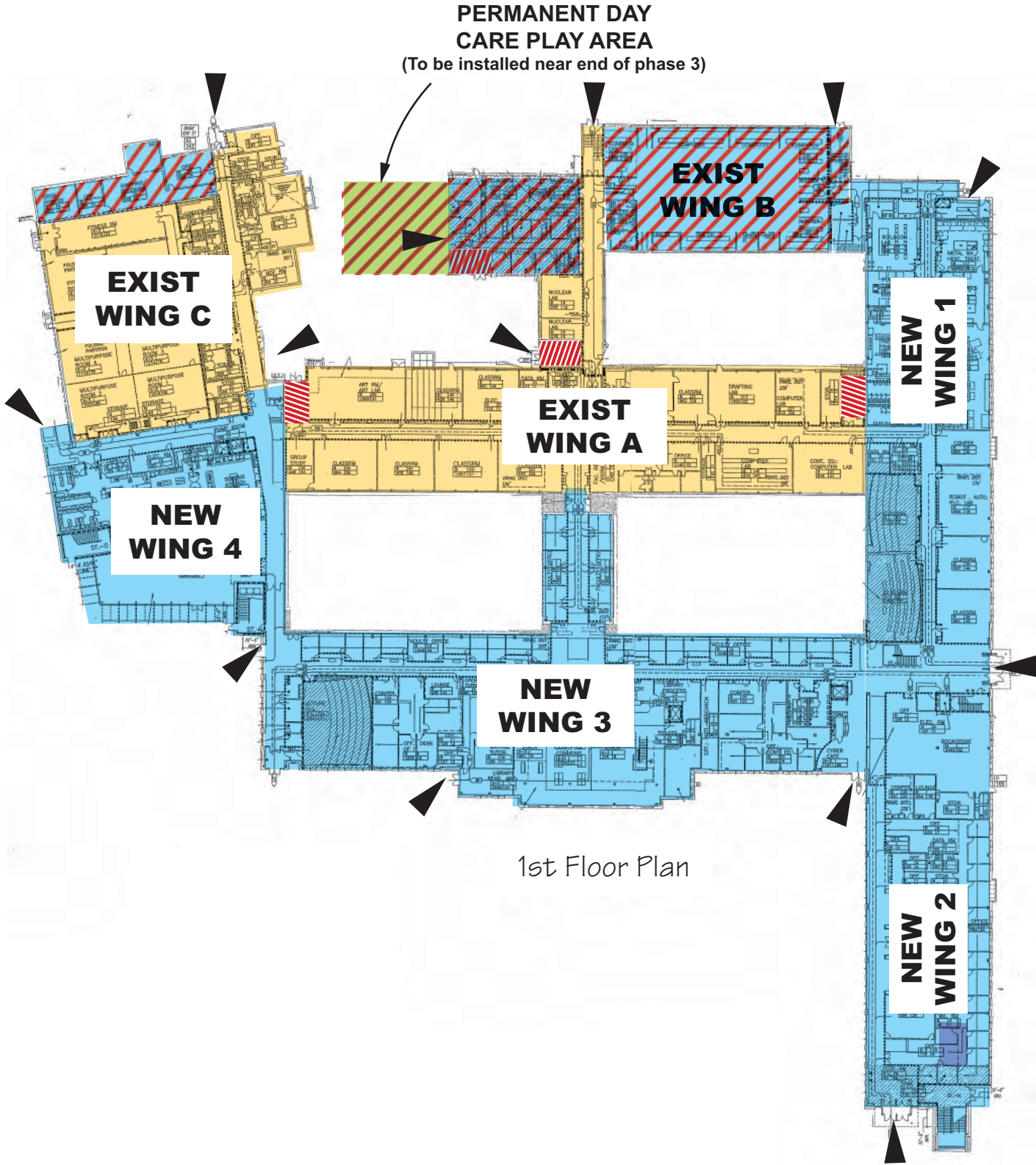


-LEGEND-

- AREA UNDER CONSTRUCTION
- AREA UNDER RENOVATION
- OWNER OCCUPIED AREA (NOT RENOVATED)
- OWNER OCCUPIED AREA (RENO COMPLETE)
- ACCESS / EGRESS PATH
- POINT OF ACCESS / EGRESS
- STAIRWELL
- TEMP ENCLOSURE / WEATHER TIGHT

Phase 2
Interior Logistics Plan
(365 Calandar Days)

SKANSKA THREE RIVERS
COMMUNITY COLLEGE



-LEGEND-

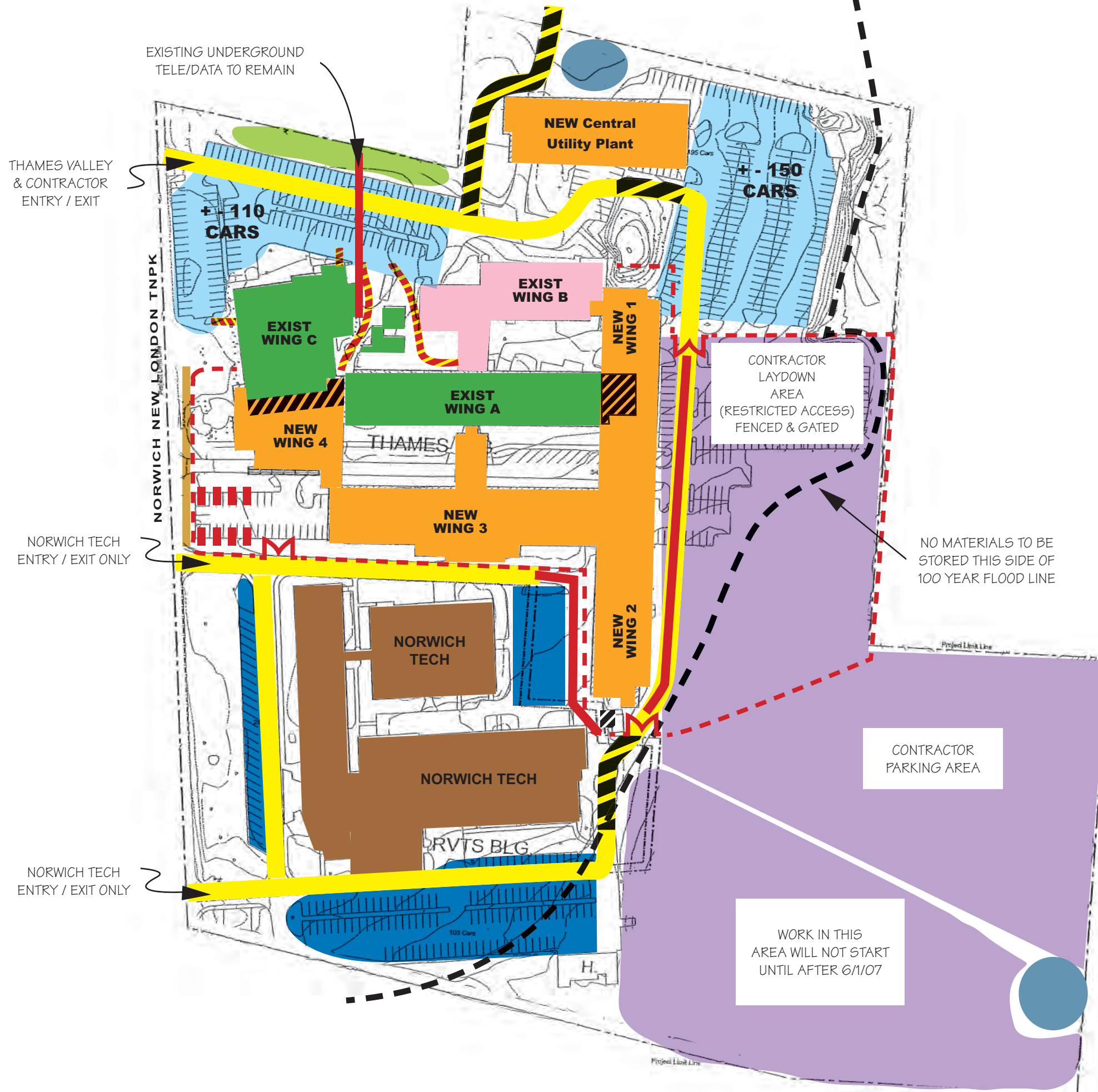
- OWNER OCCUPIED AREA (NEW CONSTRUCTION)
- AREA UNDER RENOVATION
- OWNER OCCUPIED AREA (RENO COMPLETE)
- ACCESS / EGRESS PATH
- POINT OF ACCESS / EGRESS
- STAIRWELL

Phase 3
Interior Logistics Plan
(456 Calendar Days)

SKANSKA THREE RIVERS COMMUNITY COLLEGE

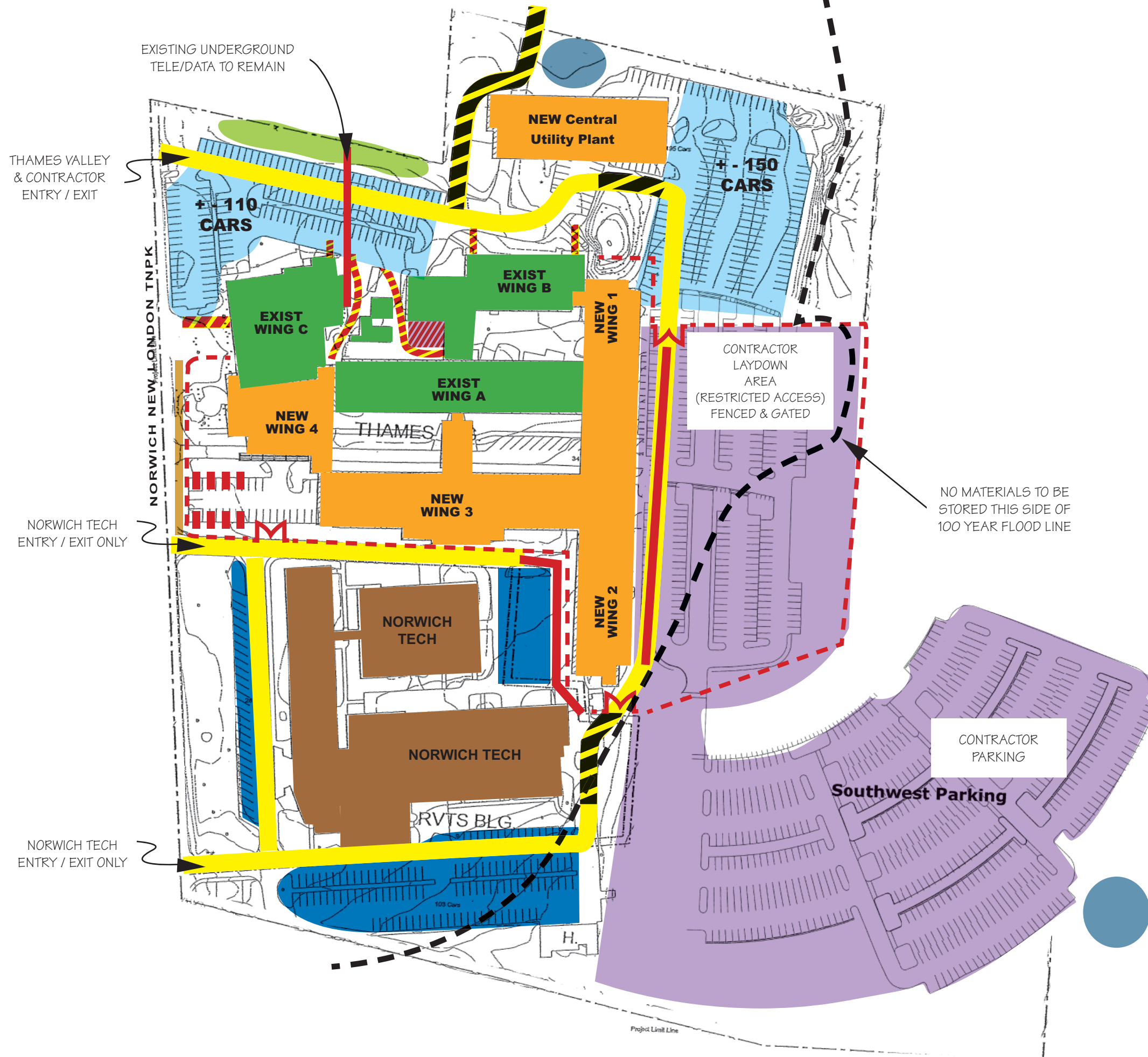
-LEGEND-

- NEW CONSTRUCTION
- THAMES VALLEY OCCUPIED AREA
- AREA UNDER RENOVATION
- NEW PARKING AREA
- DEMO PRIOR TO NEW CONSTRUCTION
- STOCK PILE AREAS (Top Soil Only)
- MAINTAIN CURRENT PARKING AREAS
- NORWICH TECH TO REMAIN
- TEMP DRIVE WAY
- MAINTAIN ACCESS ALL TIMES
- CONSTRUCTION FENCE
- CONSTRUCTION TRAILERS
- MAINTAIN NORWICH TECH PARKING (TRCC Night Parking)
- EMERGENCY ACCESS DRIVE
- ACCESS / EGRESS (To Owner Occupied Areas)
- VEHICLE ACCESS GATE
- PEDSETRIAN WALK
- STORED PLANTS (To Be Replaced)



Phase 1
Site Logistics Plan
(243 Calendar Days)

SKANSKA THREE RIVERS COMMUNITY COLLEGE



-LEGEND-

- NEW CONSTRUCTION
- THAMES VALLEY OCCUPIED AREA
- NEW PARKING AREA
- EMERGENCY ACCESS DRIVE
- TEMPORARY DAY CARE PLAY AREA
- STOCK PILE AREAS (Top Soil Only)
- MAINTAIN CURRENT PARKING AREAS
- NORWICH TECH TO REMAIN
- MAINTAIN ACCESS ALL TIMES
- CONSTRUCTION FENCE
- CONSTRUCTION TRAILERS
- MAINTAIN NORWICH TECH PARKING (TRCC Night Parking)
- ACCESS / EGRESS (To Owner Occupied Areas)
- VEHICLE ACCESS GATE
- PEDSETRIAN WALK
- STORED PLANTS (To Be Replaced)

Phase 2
Site Logistics Plan
(365 Calendar Days)

-LEGEND-

TRCC & CONTRACTOR
ENTRY / EXIT

RELOCATED
CONTRACTOR
LAY DOWN AREA

Northeast Parking

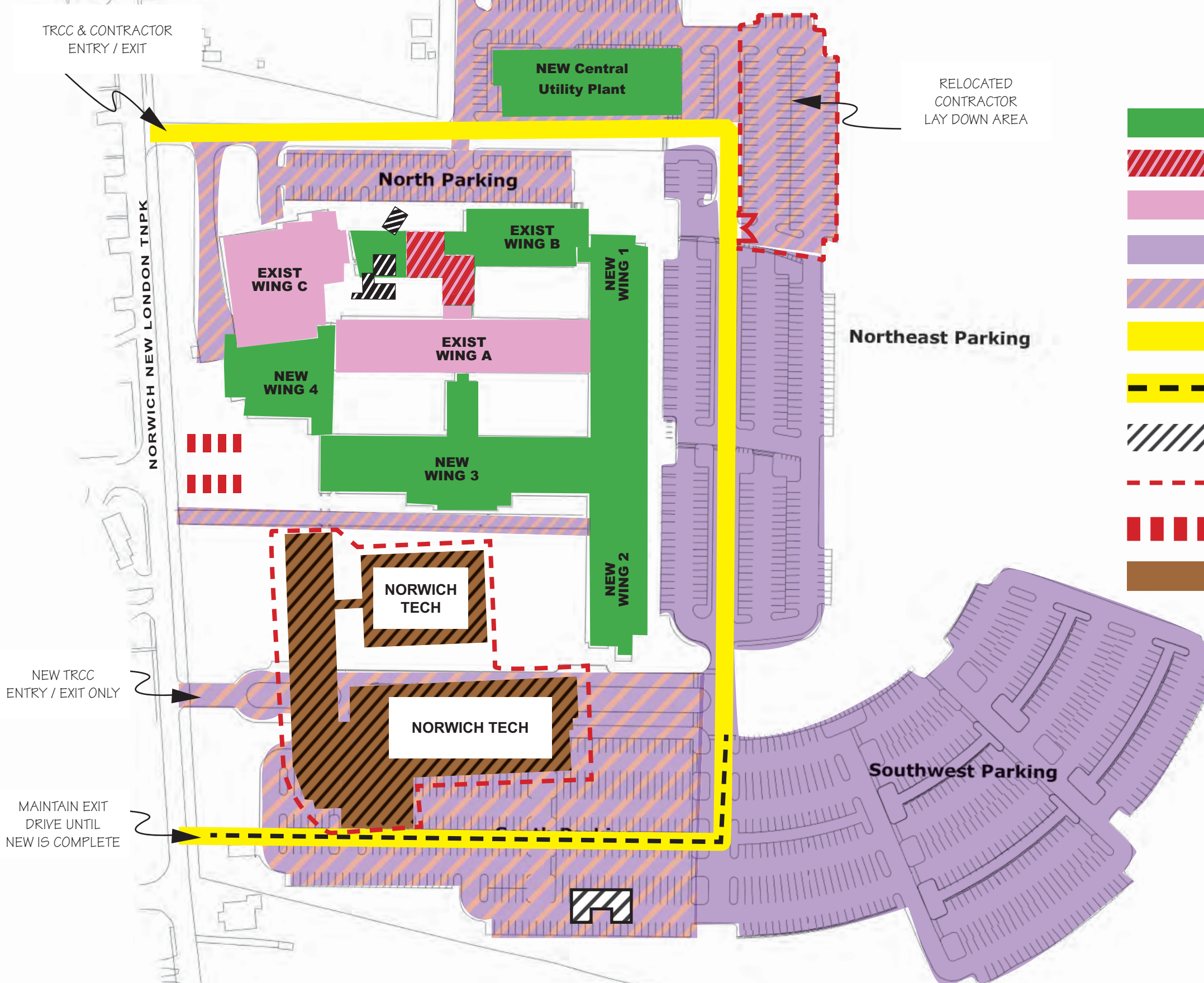
Southwest Parking

NEW TRCC
ENTRY / EXIT ONLY

MAINTAIN EXIT
DRIVE UNTIL
NEW IS COMPLETE

Phase 3

Site Logistics Plan (456 Calandar Days)



APPENDIX B

Appendix B
2007 NEASC Fifth-Year Interim Report
Committee Composition

Report Project Coordinator

Pamela Carroll, psychology faculty

Special Emphasis Areas

1. Advising & student services for distance learners

Chairperson Karen Aubin, academic dean's office

Hong-Yu Kovic, financial aid staff

Dave Malley, English faculty

Peter Patsouris, history faculty

2. Construction of the new facility

Chairperson Kem Barfield, information technology division

June Decker, mathematics faculty

Chantal Krcmar, sociology faculty

Jessie McCoy, continuing education department

3. Levels of full-time faculty

Chairperson Anthony Benoit, technologies department

Larisa Alikhanova, mathematics faculty

Amy Rozek, admissions staff

Standards for Accreditation

Standard One, Mission and Purpose

Chairperson Rick Bennett, business faculty

Dov Kugelmass, psychology faculty

Ann McNamara, business faculty

Standard Two, Planning and Evaluation

Chairperson, Steve Goetchius, information technology division

Linda Crootof, humanities faculty

Bill Dopirak, natural sciences faculty

Will Hare, anthropology faculty

Standard Three, Organization and Governance

Chairperson, Joyce Martin, human services faculty

Carol Lee, academic dean's office

Phil Mayer, economics faculty

Judy Snayd, nursing faculty

Linda Waitkus, president's office

Standard Four, The Academic Program

Chairperson Karin Edwards, student counseling and development
Mark Comeau, architecture faculty
Matt Liscum, student counselor
Barbara Maurice, mathematics faculty

Standard Five, Faculty

Chairperson, Robert Niedbala, physics faculty
Steve Neufeld, sociology faculty
Louise Summa, human resources
Barbara Yanofsky, English faculty

Standard Six, Students

Chairperson, Kirk Kirkpatrick, natural sciences faculty
Gayla Holmes, student counseling and development
Sheila Skahan, early childhood education faculty
Peg Stroup, continuing education department

Standard Seven, Library & Other Information Resources

Chairperson, Jeff Crouch, Criminal Justice faculty
Christine Languth, registration office
Christine Laverty, information technology division
Nancy Scrivano, nursing faculty

Standard Eight, Physical & Technological Resources

Chairperson, Marjorie Valentine, continuing education department
Joseph Anderson, administrative services division
Larry Davenport, information technology division

Standard Nine, Financial Resources

Chairperson, Tina Mendeloff, natural sciences faculty
Gayle O'Neill, finance department
Patricia Sauter, criminal justice faculty
Deb DiCarlo, admissions office

Standard Ten, Public Disclosure and Standard Eleven, Integrity

Chairperson, Betty Williamson, registration office
Irene Clampet, marketing faculty
Leslie Samuelson, natural sciences faculty
John Wengertsman, mathematics faculty
Matt Liscum, counselor

Institutional Effectiveness for all eleven standards

George Rezendes, institutional research

Report Editor

Jon Brammer, English faculty

APPENDIX C

Appendix C

NEASC Fifth-Year Interim Report

Project Production Timeline

2006

Organizational meeting of Chairpersons / key authors	Sep
Visit NEASC headquarters for training, model reports	Oct
Request a NEASC representative visit TRCC - R. Froh	Oct
Request report data forms from NEASC - P. O'Brien	Oct
Create a template for each chapter	Oct
Task group meetings and chapter drafts produced	O-Dec
Chairpersons meet monthly	O-Dec
Draft of 11 institutional effectiveness sections underway	Dec
Research for "plans" section underway	Dec
NEASC Director Bob Froh visits TRCC	Dec
First draft of each section due no later than	December 31st

2007

First drafts are evaluated – reorganize, eliminate duplication	J-Feb
Complete the revision of first drafts	Feb
Integrate institutional effectiveness into second drafts	Feb
Second drafts are posted to intranet	Feb
Third drafts forwarded to "key managers" for accuracy check	Mar
Fourth drafts are returned to Committee chairs for final review	Mar
Draft "report preparation and institutional overview"	Mar
Draft of "electronically offered degree programs" section	Apr
Fifth drafts are critique by editors – one voice	Apr
Sixth draft presented to Academic Division, as requested	Apr
Finalize appendixes and data forms	Apr
Notify TRCC community when report draft becomes available	May
Review report draft with NEASC Officer Bob Froh	May
Draft finalized, sent to President's cabinet & Divisions	June
Final report available to college community via library reserve and Intranet	J-July
Submit multiple copies before August 15 due date	

Revised February 2007

APPENDIX D



Whatever your
career goals, we
put you on the
right path.

At Three Rivers Community College, we provide educational opportunities that are affordable and accessible. We offer:

- 38 associate degrees and 29 certificate programs
- Transfer options to four-year colleges such as UCONN, Eastern, Central, Southern, Western, Sacred Heart, the University of Bridgeport, the University of New Haven, Fairfield University and Mitchell College

**Visit us at www.trcc.commnet.edu or
call 860-886-0177.**

AN OUTSTANDING COLLEGE EXPERIENCE

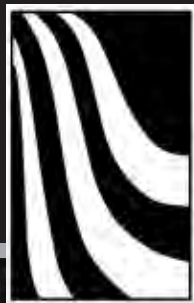


Without the outstanding price tag

Whatever students' educational or career goals, Three Rivers Community College helps them get on the right path. We offer transfer options to four-year colleges such as UCONN, Eastern, Central, Southern, Western, Sacred Heart, the University of Bridgeport, the University of New Haven, Fairfield University and Mitchell College. We also offer 38 associate degrees and 29 certificate programs. Simply, Three Rivers provides students high quality education that's accessible and affordable.

For more information call the
**Admissions Office at 860-
383-5260. Visit us online at
www.trcc.commnet.edu.**





THREE RIVERS: A GREAT PLACE TO GET STARTED



WHATEVER YOUR EDUCATIONAL OR CAREER GOALS, THREE RIVERS CAN GET YOU STARTED ON THE RIGHT PATH.

- 38 Associate Degree and 29 Certificate Programs
- Transfer options to 4-year colleges such as UConn, Eastern, Central, Sacred Heart, University of New Haven and University of Bridgeport
- Quality education that is accessible and affordable
- Financial aid and childcare available

Admissions Office: 860.383.5260
www.trcc.commnet.edu



APPENDIX E

CIHE Form: Standard 10: Public Disclosure

Para-graph	Information	Web addresses	Print Publications
10.2	How can inquiries be made about the institution? Where can questions be addressed?	<i>website:</i> www.trcc.commnet.edu; www.online.commnet.edu; some programs have links to instructors; <i>email:</i> info3rivers@trcc.commnet.edu; admissions@trcc.commnet.edu; registrar@trcc.commnet.edu	TRCC catalog, schedule of classes, student handbook
10.2	Notice of availability of publications and of audited financial statement or fair summary	www.trcc.commnet.edu	reports available in TRCC library and Deans' offices
10.3	Institutional catalog	www.trcc.commnet.edu	TRCC catalog
10.3	Obligations and responsibilities of students and the institution	same as 10.2	same as 10.2, registration forms, syllabi and flyers posted at TRCC
10.3	Information on admission and attendance	<i>website:</i> www.trcc.commnet.edu; <i>email:</i> admissions@trcc.commnet.edu	catalog, schedule of classes, student handbook
10.5	Institutional mission and objectives	same as above	same as above
10.5	Expected educational outcomes	www.trcc.commnet.edu	same as above plus program of study
10.5	Requirements, procedures and policies re: admissions	<i>website:</i> www.trcc.commnet.edu; <i>email:</i> admissions@trcc.commnet.edu	catalog, schedule of classes and handouts
10.5	Requirements, procedures and policies re: transfer credit	<i>website:</i> www.trcc.commnet.edu; <i>email:</i> registrar@trcc.commnet.edu	catalog
10.5	Student fees, charges and refund policies	same as 10.2	catalog, schedule of classes, and posted on campus
10.5	Rules and regulations for student conduct	www.trcc.commnet.edu	catalog, student handbook
10.5	Other information re: attending or withdrawing from the institution	<i>website:</i> www.trcc.commnet.edu; <i>email:</i> registrar@trcc.commnet.edu	catalog, schedule of classes, syllabi posted at various times
10.5	Academic programs	www.trcc.commnet.edu; www.online.commnet.edu	catalog, schedule of classes, program reviews
10.5	Courses currently offered	www.trcc.commnet.edu; www.online.commnet.edu	schedule of classes
10.5	Other available educational opportunities	www.trcc.commnet.edu	catalog, schedule of classes, service learning brochures
10.5	Other academic policies and procedures	www.trcc.commnet.edu	catalog, student handbook
10.5	Requirements for degrees and other forms of academic recognition	www.trcc.commnet.edu	catalog, commencement brochure, newspapers, program reviews-accreditation report
10.6	List of current faculty, indicating department or program affiliation, distinguishing between full- and part-time, showing degrees held and institutions granting them	www.trcc.commnet.edu	catalog

CIHE Form: Standard 10: Public Disclosure

Para-graph	Information	Web addresses	Print Publications
10.6	Names and positions of administrative officers	www.trcc.commnet.edu	catalog, student handbook
10.6	Names and principal affiliations of members of the governing board	www.trcc.commnet.edu	catalog
10.7	Locations and programs available at branch campuses, other instructional locations, and overseas operations at which students can enroll for a degree, along with a description of programs and services available at each location	website: www.trcc.commnet.edu ; email: registrar@trcc.commnet.edu	catalog, schedule
10.8	Programs, courses, services, and personnel not available in any given academic year.	www.trcc.commnet.edu/academics/faculty.htm	office hours of personnel available at all campuses (info would be available through Academic Dean's office)
10.9	Size and characteristics of the student body	www.trcc.commnet.edu ; intranet - report to Cabinet	catalog, cabinet minutes
10.9	Description of the campus setting	www.trcc.commnet.edu	catalog
10.9	Availability of academic and other support services	www.trcc.commnet.edu ; www.trcc.commnet.edu/Ed_Resources/TASC/index.htm	catalog, student handbook, schedule of classes, brochures for career services, learning center, writing center, math lab
10.9	Range of co-curricular and non-academic opportunities available to students	www.trcc.commnet.edu	posted, publications in newspapers, student newspaper, catalog, student handbook
10.9	Institutional learning and physical resources from which a student can reasonably be expected to benefit	www.trcc.commnet.edu	catalog, student handbook
10.10	Institutional goals for students' education	www.trcc.commnet.edu	catalog, student handbook, mission statement
10.11	Success of students in achieving institutional goals including rates of retention and graduation and other measure of student success appropriate to institutional mission. Passage rates for licensure exams, as appropriate	Institutional Research Department looking at creating website for similar information.	accreditation review, program reviews, DHE performance reviews
10.11	Total cost of education, including availability of financial aid and typical length of study	www.trcc.commnet.edu ; www.trcc.commnet.edu/fin_matters/fin_aid_exp.htm	catalog, schedule of classes
10.11	Expected amount of student debt upon graduation	www.trcc.commnet.edu ; www.trcc.commnet.edu/fin_matters/fin_aid_exp.htm	students can contact the financial aid office.
10.13	Statement about accreditation	www.trcc.commnet.edu	catalog, student handbook, program reviews

APPENDIX F



New England Association of Schools and Colleges
Commission on Institutions of Higher Education
209 Burlington Road • Bedford, MA 01730
phone: (781) 271-0022 • fax: (781) 271-0950
<http://www.neasc.org>

CIHE DATA FORMS FOR PUBLIC INSTITUTIONS
GENERAL INFORMATION

Institution Name:

Three Rivers Community College

FICE Code:

9765

Carnegie Classification:

Associate/Public-Rural-serving Medium

Financial Results for Year Ending:

Most Recent Year

1 Year Prior

2 Years Prior

Fiscal year ends:

30-Jun-07

Annual Audit

Certified: Qualified

Yes/No Unqualified

Yes	Unqualified
Yes	Unqualified

Contact Person:

Name:

Ann Branchini

Title:

Academic Dean

Telephone Number:

860-383-5204

E-mail address:

abbranchini@trcc.commnet.edu

FISCAL YEAR ENDS month & day: (06 /30)		3 YEARS PRIOR (FY 2004)	2 YEARS PRIOR (FY 2005)	1 YEAR PRIOR (FY 2006)	MOST RECENTLY COMPLETED FY (FY 2007)	CURRENT BUDGET (FY 2008)
2		OPERATING REVENUES				
3		TUITION & FEES	\$6,270,000	\$6,791,000	\$7,208,000	\$8,372,000
4		AUXILIARY ENTERPRISES (Enter here and/or on line 9)				
5		LESS: SCHOLARSHIP ALLOWANCE	(\$1,852,000)	(\$2,152,000)	(\$2,342,000)	(\$2,500,000)
6		NET STUDENT FEES	\$4,418,000	\$4,639,000	\$4,866,000	\$0
7		GOVERNMENT GRANTS & CONTRACTS	\$2,148,000	\$2,351,000	\$2,546,000	\$2,313,000
8		PRIVATE GIFTS, GRANTS & CONTRACTS	\$242,000	\$250,000	\$266,000	\$200,000
9		AUXILIARY ENTERPRISES (Enter here or on line 4)				
10		OTHER	\$352,000	\$464,000	\$472,000	\$444,000
11		TOTAL OPERATING REVENUES	\$7,160,000	\$7,704,000	\$8,150,000	\$0
12		OPERATING EXPENSES				
13		INSTRUCTION	\$7,980,000	\$9,936,000	\$9,992,000	\$10,292,000
14		RESEARCH				
15		PUBLIC SERVICE		\$1,000		
16		ACADEMIC SUPPORT	\$3,896,000	\$4,421,000	\$4,778,000	\$4,921,000
17		STUDENT SERVICES	\$2,599,000	\$2,928,000	\$3,088,000	\$3,242,400
18		INSTITUTIONAL SUPPORT	\$2,696,000	\$3,170,000	\$3,008,000	\$4,158,000
19		OPERATION, MAINTENANCE OF PLANT	\$1,870,000	\$2,279,000	\$2,178,000	\$2,287,000
20		SCHOLARSHIPS & FELLOWSHIPS	\$1,070,000	\$1,124,000	\$1,138,000	\$1,400,000
21		AUXILIARY ENTERPRISES				
22		DEPRECIATION	\$482,000	\$456,000	\$475,000	\$485,000
23		OTHER				
24		TOTAL OPERATING EXPENDITURES	\$20,593,000	\$24,315,000	\$24,657,000	\$0
25		OPERATING LOSS	(\$13,433,000)	(\$16,611,000)	(\$16,507,000)	\$0
26		NON OPERATING REVENUES				
27		STATE APPROPRIATIONS (NET)	\$14,764,000	\$16,066,000	\$16,454,000	\$16,999,591
28		INVESTMENT INCOME				
29		INTEREST INCOME	\$36,000	\$96,000	\$203,000	\$150,000
30		OTHER	\$76,000	\$28,000	\$47,000	\$31,400
31		NET NON OPERATING REVENUES	\$14,876,000	\$16,190,000	\$16,704,000	\$0
32		INCOME BEFORE OTHER REVENUES EXPENSES, GAINS OR LOSSES	\$1,443,000	(\$421,000)	\$197,000	\$0
33		CAPITAL APPROPRIATIONS	\$5,344,000	\$2,215,000	\$481,000	\$0
34		OTHER	(\$231,000)	(\$393,000)	(\$232,000)	(\$257,000)
35		TOTAL INCREASE/DECREASE IN NET ASSETS	\$6,556,000	\$1,401,000	\$446,000	\$0

FISCAL YEAR ENDS month & day (06 /30)			3 YEARS PRIOR (FY 2004)	2 YEARS PRIOR (FY 2005)	1 YEAR PRIOR (FY 2006)	MOST RECENTLY COMPLETED FY (FY 2007)	CURRENT BUDGET (FY 2008)
3		NET ASSETS					
4		NET ASSETS BEGINNING OF YEAR	\$3,560,000	\$10,116,000	\$11,517,000		
5		TOTAL INCREASE/DECREASE IN NET ASSETS	\$6,556,000	\$1,401,000	\$446,000		
6		NET ASSETS END OF YEAR	\$10,116,000	\$11,517,000	\$11,963,000	\$0.00	\$0.00
8		INDEBTEDNESS					
9		BEGINNING BALANCE					
10		ADDITIONS					
11		REDUCTIONS					
12		ENDING BALANCE	\$0.00	\$0.00	\$0.00	\$0.00	\$0.00
13		INTEREST PAID DURING FISCAL YEAR					
14		CURRENT PORTION					

Note: Entries for this data form can be obtained from the institution's general-purpose financial statements (GPFS).

**CIHE DATA FORM 3
STUDENT CHARGES**

FISCAL YEAR ENDS month & day: (/)	3 YEARS PRIOR (FY 2004)	2 YEARS PRIOR (FY 2005)	1 YEAR PRIOR (FY 2006)	MOST RECENTLY COMPLETED FY (FY 2007)	CURRENT BUDGET (FY 2008)
--	---	---	--	---	--

3		TUITION AND FEE CHARGES					
4		FULL-TIME UNDERGRADUATE STUDENT					
5		IN-STATE	\$2,310	\$2,406	\$2,536	\$2,672	\$2,828
6		OUT-OF-STATE	\$6,890	\$7,178	\$7,568	\$7,976	\$8,444
7		PART-TIME UNDERGRADUATE STUDENT					
8		IN-STATE	\$2310 Prorated	\$2406 Prorated	\$2536 Prorated	\$2672 Prorated	\$2828 Prorated
9		OUT-OF-STATE	\$6890 Prorated	\$7178 Prorated	\$7568 Prorated	\$7976 Prorated	\$8444 Prorated
10		FULL-TIME GRADUATE STUDENT					
11		IN-STATE	N/A	N/A	N/A	N/A	N/A
12		OUT-OF-STATE	N/A	N/A	N/A	N/A	N/A
13		PART-TIME GRADUATE STUDENT					
14		IN-STATE	N/A	N/A	N/A	N/A	N/A
15		OUT-OF-STATE	N/A	N/A	N/A	N/A	N/A

17		ROOM AND BOARD CHARGES					
18		UNDERGRADUATE STUDENT	N/A	N/A	N/A	N/A	N/A
19		GRADUATE STUDENT	N/A	N/A	N/A	N/A	N/A

CIHE DATA FORM 4
STUDENT ADMISSIONS DATA (Fall Term)
Credit Seeking Students Only, Including Continuing Education

FALL TERM (YEAR)		4 YEARS AGO (FY2003)	3 YEARS AGO (FY2004)	2 YEARS AGO (FY 05_)	1 YEAR AGO (FY _06_)	CURRENT YEAR (FY _07_)
2		FIRST-YEAR STUDENTS				
3		COMPLETED APPLICATIONS	994	1026	1323	1351
4		APPLICATIONS ACCEPTED	943	1013	1308	1333
5		APPLICANTS ENROLLED	676	714	797	827
6		AVERAGE STATISTICAL INDICATOR OF APTITUDE OF ENROLLEES (describe below)				
7		TRANSFERS-UNDERGRADUATE				
8		COMPLETED APPLICATIONS	499	533	634	668
9		APPLICATIONS ACCEPTED	475	528	622	558
10		APPLICANTS ENROLLED	462	507	589	544
11		MASTER'S DEGREE STUDENTS				
12		COMPLETED APPLICATIONS	N/A	N/A	N/A	N/A
13		APPLICATIONS ACCEPTED	N/A	N/A	N/A	N/A
14		APPLICANTS ENROLLED	N/A	N/A	N/A	N/A
15		FIRST-PROFESSIONAL DEGREE STUDENTS				
16		COMPLETED APPLICATIONS	N/A	N/A	N/A	N/A
17		APPLICATIONS ACCEPTED	N/A	N/A	N/A	N/A
18		APPLICANTS ENROLLED	N/A	N/A	N/A	N/A
19		DOCTORAL DEGREE STUDENTS				
20		COMPLETED APPLICATIONS	N/A	N/A	N/A	N/A
21		APPLICATIONS ACCEPTED	N/A	N/A	N/A	N/A
22		APPLICANTS ENROLLED	N/A	N/A	N/A	N/A

Description of statistical indicator of aptitude of first-year enrollees (average combined SAT, average rank in high school graduating class, etc.):

CIHE DATA FORM 5
STUDENT ENROLLMENT DATA (Fall Term)
Credit Seeking Students Only, Including Continuing Education

			4 YEARS AGO (FY2003)	3 YEARS AGO (FY2004)	2 YEARS AGO (FY2005)	1 YEAR AGO (FY2006)	CURRENT YEAR (FY2007)
2		UNDERGRADUATE					
3		FIRST YEAR: FULL-TIME HEADCOUNT	708	690	824	831	878
4		PART-TIME HEADCOUNT	1167	1251	1241	1233	1216
5		TOTAL HEADCOUNT	1875	1941	2065	2064	2094
6		TOTAL FTE	1118	1130	1237	1251	1296
7		SECOND YEAR: FULL-TIME HEADCOUNT	252	274	310	304	362
8		PART-TIME HEADCOUNT	888	904	910	885	916
9		TOTAL HEADCOUNT	1140	1178	1220	1189	1278
10		TOTAL FTE	564	593	637	627	690
11		THIRD YEAR: FULL-TIME HEADCOUNT	N/A	N/A	N/A	N/A	N/A
12		PART-TIME HEADCOUNT	N/A	N/A	N/A	N/A	N/A
13		TOTAL HEADCOUNT	0	0	0	0	0
14		TOTAL FTE	N/A	N/A	N/A	N/A	N/A
15		FOURTH YEAR: FULL-TIME HEADCOUNT	N/A	N/A	N/A	N/A	N/A
16		PART-TIME HEADCOUNT	N/A	N/A	N/A	N/A	N/A
17		TOTAL HEADCOUNT	0	0	0	0	0
18		TOTAL FTE	N/A	N/A	N/A	N/A	N/A
19		UNCLASSIFIED: FULL-TIME HEADCOUNT	54	45	35	38	39
20		PART-TIME HEADCOUNT	555	458	444	369	382
21		TOTAL HEADCOUNT	609	503	479	407	421
22		TOTAL FTE	212	169	159	141	145
23		TOTAL UNDERGRADUATE HEADCOUNT	3624	3622	3764	3660	3793
24		TOTAL UNDERGRADUATE FTE	1894	1892	2033	2019	2131
25		GRADUATE					
26		FULL-TIME HEADCOUNT	N/A	N/A	N/A	N/A	N/A
27		PART-TIME HEADCOUNT	N/A	N/A	N/A	N/A	N/A
28		TOTAL GRADUATE HEADCOUNT	0	0	0	0	0
29		TOTAL GRADUATE FTE	N/A	N/A	N/A	N/A	N/A
31		GRAND TOTAL HEADCOUNT	3624	5514	5797	5679	5924
32		GRAND TOTAL FTE	1894	1892	2033	2019	2131

**UNDERGRADUATE RETENTION AND
GRADUATION RATES**

34		1ST YEAR STUDENTS RETURNING FOR 2ND YEAR	872	947	990	976	992
35		GRADUATION RATE	15	8	11	14	14

DEFINITION OF UNDERGRADUATE FTE
DEFINITION OF GRADUATE FTE

(total credit hours)/15

CIHE DATA FORM 6
PROJECTED FINANCIAL, TUITION AND FEE, AND ENROLLMENT
DATA FOR NEXT THREE YEARS

		Fiscal Years	FY 2008	FY 2009	FY 2010
--	--	---------------------	----------------	----------------	----------------

PROJECTED FINANCIAL DATA (000s omitted)

3		TOTAL OPERATING REVENUES	\$8,829,000	\$9,270,000	\$10,475,000
4		TOTAL OPERATING EXPENDITURES	\$26,785,400	\$28,500,000	\$29,475,000
5		TOTAL OPERATING LOSS	(\$17,956,400)	(\$19,230,000)	(\$19,000,000)
6		NET NON OPERATING REVENUE	\$17,180,991	\$17,700,000	\$20,000,000
7		CAPITAL APPROPRIATIONS AND OTHER REVENUES	(\$257,000)	(\$400,000)	(\$500,000)
8		TOTAL INCREASE/DECREASE IN NET ASSETS	(\$1,032,409)	(\$1,930,000)	\$500,000

PROJECTED TUITION AND FEE CHARGE

11		FULL-TIME UNDERGRADUATE STUDENT			
12		IN-STATE	2496	2640	3000
13		OUT-OF-STATE	7488	7920	9000
14		PART-TIME UNDERGRADUATE STUDENT			
15		IN-STATE	104/credit	110/credit	125/credit
16		OUT-OF-STATE	312/credit	330/credit	375/credit
17		FULL-TIME GRADUATE STUDENT			
18		IN-STATE	N/A	N/A	N/A
19		OUT-OF-STATE	N/A	N/A	N/A
20		PART-TIME GRADUATE STUDENT			
21		IN-STATE	N/A	N/A	N/A
22		OUT-OF-STATE	N/A	N/A	N/A

CIHE DATA FORM 6
PROJECTED FINANCIAL, TUITION AND FEE, AND ENROLLMENT
DATA FOR NEXT THREE YEARS

		Fiscal Years	FY 2008	FY 2009	FY 2010
--	--	---------------------	----------------	----------------	----------------

PROJECTED ENROLLMENT

31		UNDERGRADUATE STUDENTS			
32		FULL-TIME HEADCOUNT	1305	1331	1358
33		PART-TIME HEADCOUNT	2526	2577	2667
34		IN-STATE HEADCOUNT	3774	3849	3965
35		OUT-OF-STATE HEADCOUNT	57	59	60
36		TOTAL HEADCOUNT	3831	3908	4025
37		TOTAL FTE	2152	2217	2284
38		GRADUATE STUDENTS			
39		FULL-TIME HEADCOUNT	N/A	N/A	N/A
40		PART-TIME HEADCOUNT	N/A	N/A	N/A
41		IN-STATE HEADCOUNT	N/A	N/A	N/A
42		OUT-OF-STATE HEADCOUNT	N/A	N/A	N/A
43		TOTAL HEADCOUNT	0	0	0
44		TOTAL FTE	N/A	N/A	N/A

CIHE DATA FORM 7
FACULTY PROFILE

			4 YEARS AGO (FY 2003)		3 YEARS AGO (FY 2004)		2 YEARS AGO (FY 2005)		1 YEAR AGO (FY 2006)		CURRENT YEAR (FY 2007)	
			FT	PT	FT	PT	FT	PT	FT	PT	FT	PT
3		NUMBER OF FACULTY										
4		PROFESSOR	27		27		27		26		29	
5		ASSOCIATE	13		7		12		8		10	
6		ASSISTANT	16		18		15		17		19	
7		INSTRUCTOR	11		10		16		15		13	
8		OTHER	1	144	2	148	8	148	7	155	5	164
9		TOTAL	68	144	64	148	78	148	73	155	76	164
10		AGE (MINIMUM, MAXIMUM, MEDIAN)										
11		PROFESSOR: MINIMUM	43		44		42		43		41	
12		MAXIMUM	68		68		66		67		68	
13		MEDIAN	56		55		55		57		57	
14		ASSOCIATE: MINIMUM	41		41		39		40		43	
15		MAXIMUM	65		57		59		60		59	
16		MEDIAN	55		51		55		54		54	
17		ASSISTANT: MINIMUM	37		38		41		42		31	
18		MAXIMUM	58		58		59		61		62	
19		MEDIAN	50		48		47		50		49	
20		INSTRUCTOR: MINIMUM	32		32		29		30		28	
21		MAXIMUM	59		59		60		60		67	
22		MEDIAN	48		49		47		48		42	
23		OTHER: MINIMUM	46		44		45		32		46	
24		MAXIMUM	46		44		58		51		52	
25		MEDIAN	53		44		47		41		48	

Note: Include all full-time and part-time teaching faculty with unmodified titles currently on campus, including academic administrators with faculty titles. Do not include unpaid or token-paid faculty or non-teaching faculty with modified titles (e.g. research professor). Include teaching visiting faculty.

**CIHE DATA FORM 7
FACULTY PROFILE**

			4 YEARS AGO (FY 2003)		3 YEARS AGO (FY 2004)		2 YEARS AGO (FY 2005)		1 YEAR AGO (FY 2006)		CURRENT YEAR (FY 2007)	
			FT	PT	FT	PT	FT	PT	FT	PT	FT	PT

MALE/FEMALE

31		PROFESSOR: MALE	16		14		14		13		13	
32		FEMALE	11		13		13		13		16	
33		ASSOCIATE: MALE	5		2		3		2		6	
34		FEMALE	8		5		9		6		4	
35		ASSISTANT: MALE	6		8		6		6		7	
36		FEMALE	10		10		9		11		12	
37		INSTRUCTOR: MALE	5		4		12		9		8	
38		FEMALE	6		6		4		6		5	
39		OTHER: MALE	0	72	0	66	0	73	1	76	0	75
41		FEMALE	1	72	2	82	8	75	6	79	5	89
41		TOTAL MALE	32	72	28	66	35	73	31	76	34	75
42		TOTAL FEMALE	36	72	36	82	43	75	42	79	42	89

**YEARS AT THIS INSTITUTION
(MINIMUM, MAXIMUM, MEDIAN)**

44		PROFESSOR: MINIMUM	9		8		6		7		7	
45		MAXIMUM	33		33		34		35		36	
46		MEDIAN	18		17		18		19		20	
47		ASSOCIATE: MINIMUM	4		4		4		6		3	
48		MAXIMUM	22		11		15		16		17	
49		MEDIAN	10		11		8		9		8	
50		ASSISTANT: MINIMUM	0		1		1		2		1	
51		MAXIMUM	19		18		19		20		21	
52		MEDIAN	6		5		4		5		5	
53		INSTRUCTOR: MINIMUM	0		1		0		1		0	
54		MAXIMUM	4		3		4		16		3	
55		MEDIAN	1		2		1		2		3	
56		OTHER: MINIMUM	0		1		0		0		0	
57		MAXIMUM	0		3		4		2		3	
58		MEDIAN	8		2		0		0		0	

**CIHE DATA FORM 7
FACULTY PROFILE**

			4 YEARS AGO (FY 2003)		3 YEARS AGO (FY 2004)		2 YEARS AGO (FY 2005)		1 YEAR AGO (FY 2006)		CURRENT YEAR (FY 2007)	
			FT	PT	FT	PT	FT	PT	FT	PT	FT	PT
60		<u>HIGHEST DEGREE EARNED</u>										
61		DOCTORATE										
62		PROFESSOR	3		2		1		1		1	
63		ASSOCIATE	1		1		2		2		3	
64		ASSISTANT	1		1		1		1		1	
65		INSTRUCTOR	3		3		3		2		3	
66		OTHER	0		0		0		1		0	
67		TOTAL	8	0	7	0	7	0	7	0	8	0

MASTER'S

69		PROFESSOR	24		24		25		24		27	
70		ASSOCIATE	11		6		10		6		7	
71		ASSISTANT	15		17		14		16		18	
72		INSTRUCTOR	8		7		13		13		10	
73		OTHER	1		2		7		5		5	
74		TOTAL	59	0	56	0	69	0	64	0	67	0

BACHELOR'S

76		PROFESSOR	0		1		1		1		1	
77		ASSOCIATE	1		0		0		0		0	
78		ASSISTANT	0		0		0		0		0	
79		INSTRUCTOR	0		0		0		0		0	
80		OTHER	0		0		1		1		0	
81		TOTAL	1	0	1	0	2	0	2	0	1	0

PROFESSIONAL LICENSE

83		PROFESSOR	5		8		8		8		8	
84		ASSOCIATE	4		1		0		0		1	
85		ASSISTANT	2		5		5		5		4	
86		INSTRUCTOR	0		0		0		0		1	
87		OTHER	1		2		2		1		4	
88		TOTAL	12	0	16	0	15	0	14	0	18	0

**CIHE DATA FORM 7
FACULTY PROFILE**

			4 YEARS AGO (FY 2003)		3 YEARS AGO (FY 2004)		2 YEARS AGO (FY 2005)		1 YEAR AGO (FY 2006)		CURRENT YEAR (FY 2007)	
			FT	PT	FT	PT	FT	PT	FT	PT	FT	PT

TEACHING LOAD

90		FALL TERM ONLY FOR EACH YEAR (MINIMUM, MAXIMUM, MEDIAN IN CREDIT HOURS)										
91		PROFESSOR: MINIMUM	0		3		0		8		8	
92		MAXIMUM	21		18		18		24		20	
93		MEDIAN	12		12		12		13		12	
94		ASSOCIATE: MINIMUM	6		6		2.3		3		6	
95		MAXIMUM	21		20		20		18		18	
96		MEDIAN	14		12		12		10.5		12	
97		ASSISTANT: MINIMUM	6		6		0		9		9	
98		MAXIMUM	31		21		15		15.3		16	
99		MEDIAN	12		12		11		14		12	
100		INSTRUCTOR: MINIMUM	9		2		9		9		12	
101		MAXIMUM	15		15		16		18		16	
102		MEDIAN	12		12		12		12		12	
103		OTHER: MINIMUM	12	1	10	1	9	1	6	1	4	1
104		MAXIMUM	14.8	18	10.5	16	15	16	15	9	12	8
105		MEDIAN	13.4	4	10.25	5	12	4	13	4	8	3

Explanation of teaching load (if not measured in credit hours):

CIHE DATA FORM 7
FACULTY PROFILE

			4 YEARS AGO (FY 2003)		3 YEARS AGO (FY 2004)		2 YEARS AGO (FY 2005)		1 YEAR AGO (FY 2006)		CURRENT YEAR (FY 2007)	
			FT	PT	FT	PT	FT	PT	FT	PT	FT	PT
110		BASE SALARY FOR ACADEMIC YEAR (MINIMUM, MAXIMUM, MEDIAN)										
111		PROFESSOR: MINIMUM	\$54,492		\$58,343		\$59,339		\$59,339		\$65,151	
112		MAXIMUM	\$78,923		\$82,516		\$84,780		\$84,780		\$87,327	
113		MEDIAN	\$74,235		\$73,247		\$74,995		\$79,888		\$81,279	
114		ASSOCIATE: MINIMUM	\$48,132		\$53,648		\$50,322		\$55,124		\$55,017	
115		MAXIMUM	\$68,802		\$66,952		\$66,952		\$70,505		\$74,377	
116		MEDIAN	\$57,672		\$57,345		\$58,542		\$59,397		\$60,297	
117		ASSISTANT: MINIMUM	\$42,061		\$43,570		\$46,021		\$47,286		\$46,539	
118		MAXIMUM	\$67,991		\$63,849		\$63,907		\$63,907		\$65,820	
119		MEDIAN	\$48,239		\$50,434		\$48,963		\$51,819		\$51,816	
120		INSTRUCTOR: MINIMUM	\$39,455		\$40,343		\$41,252		\$42,385		\$43,657	
121		MAXIMUM	\$42,061		\$44,339		\$46,582		\$50,308		\$47,980	
122		MEDIAN	\$39,455		\$41,675		\$42,613		\$45,183		\$46,539	
123		OTHER: MINIMUM	\$20,291		\$40,343		\$41,252		\$42,385		\$46,539	
124		MAXIMUM	\$20,291		\$46,021		\$44,550		\$56,019		\$50,260	
125		MEDIAN	\$20,291		\$43,182		\$42,385		\$43,784		\$47,148	
126		FRINGE BENEFITS (MINIMUM, MAXIMUM, MEDIAN)										
127		PROFESSOR: MINIMUM	\$21,797		\$23,337		\$23,736		\$23,736		\$26,060	
128		MAXIMUM	\$31,569		\$33,006		\$33,912		\$33,912		\$34,931	
129		MEDIAN	\$29,694		\$29,299		\$29,998		\$31,955		\$32,512	
130		ASSOCIATE: MINIMUM	\$19,253		\$21,459		\$20,129		\$22,050		\$22,007	
131		MAXIMUM	\$27,521		\$26,781		\$26,781		\$28,202		\$29,751	
132		MEDIAN	\$23,069		\$22,938		\$23,417		\$23,759		\$24,119	
133		ASSISTANT: MINIMUM	\$16,824		\$17,428		\$18,408		\$18,914		\$18,616	
134		MAXIMUM	\$27,196		\$25,540		\$25,563		\$25,563		\$26,328	
135		MEDIAN	\$19,296		\$20,174		\$19,585		\$20,728		\$20,726	
136		INSTRUCTOR: MINIMUM	\$15,782		\$16,137		\$16,501		\$16,954		\$17,463	
137		MAXIMUM	\$16,824		\$17,736		\$18,633		\$20,123		\$19,192	
138		MEDIAN	\$15,782		\$16,670		\$17,045		\$18,073		\$18,616	
139		OTHER: MINIMUM	\$8,116		\$16,137		\$16,501		\$16,954		\$18,616	
140		MAXIMUM	\$8,116		\$18,408		\$17,820		\$22,408		\$20,104	
141		MEDIAN	\$8,116		\$17,273		\$16,954		\$17,514		\$18,859	

**CIHE DATA FORM 7
FACULTY PROFILE**

			4 YEARS AGO (FY 2003)		3 YEARS AGO (FY 2004)		2 YEARS AGO (FY 2005)		1 YEAR AGO (FY 2006)		CURRENT YEAR (FY 2007)	
			FT	PT	FT	PT	FT	PT	FT	PT	FT	PT
142		NUMBER OF FACULTY APPOINTED										
143		PROFESSOR	0		0		0		0		0	
144		ASSOCIATE	0		0		0		0		0	
145		ASSISTANT	0		2		0		0		0	
146		INSTRUCTOR	3		0		10		2		4	
147		OTHER	1		2		8		7		5	
148		TOTAL	4	0	4	0	18	0	9	0	9	0
149		NUMBER OF FACULTY IN TENURED POSITIONS										
150		PROFESSOR	27		27		26		26		29	
151		ASSOCIATE	12		5		8		7		6	
152		ASSISTANT	6		8		4		3		4	
153		INSTRUCTOR	0		0		0		0		0	
154		OTHER	0	0	0	0	0	0	0	0	0	0
155		TOTAL	45	0	40	0	38	0	36	0	39	0
156		NUMBER OF FACULTY DEPARTING										
157		PROFESSOR	0		0		0		1		0	
158		ASSOCIATE	0		0		0		0		0	
159		ASSISTANT	1		1		0		1		0	
160		INSTRUCTOR	1		1		0		0		0	
161		OTHER	0		0		0		0		0	
162		TOTAL	2	0	2	0	0	0	2	0	0	0
163		NUMBER OF FACULTY RETIRING										
164		PROFESSOR	4		8		0		1		0	
165		ASSOCIATE	1		3		0		0		2	
166		ASSISTANT	0		0		0		0		0	
167		INSTRUCTOR	0		0		0		0		0	
168		OTHER	0		0		0		0		0	
169		TOTAL	5	0	11	0	0	0	1	0	2	0

CIHE DATA FORM 7
FACULTY PROFILE

		4 YEARS AGO (FY 2003)		3 YEARS AGO (FY 2004)		2 YEARS AGO (FY 2005)		1 YEAR AGO (FY 2006)		CURRENT YEAR (FY 2007)		
		FT	PT	FT	PT	FT	PT	FT	PT	FT	PT	
170		NUMBER OF FACULTY BY DEPARTMENT OR COMPARABLE ACADEMIC UNIT (USE THE INSERT ROWS FUNCTION TO ADDITIONAL ROWS AS NEEDED)										
171		NAME OF DEPARTMENT OR ACADEMIC UNIT										
172												
173		Business	8	12	6	12	8	10	8	10	8	10
174		Engineering Technologies	20	22	16	24	18	24	17	28	17	26
175		Humanities	12	42	9	45	14	46	13	47	13	50
176		Mathematics	6	15	6	16	7	17	7	19	7	25
177		Nursing	7	8	10	11	11	11	10	11	11	12
178		Science	5	12	6	9	7	7	7	11	7	8
179		Social Science	10	33	11	31	13	33	11	29	13	33
180		Total	68	144	64	148	78	148	73	155	76	164
181												

CIHE DATA FORM 8
STUDENT HEADCOUNT BY UNDERGRADUATE MAJOR AND GRADUATE PROGRAM

FALL TERM (YEAR)	4 YEARS AGO (FY2003)	3 YEARS AGO (FY2004)	2 YEARS AGO (FY2005)	1 YEAR AGO (FY2006)	CURRENT YEAR (FY2007)
------------------	-------------------------	-------------------------	-------------------------	------------------------	-----------------------------

UNDERGRADUATE

3	CERTIFICATE					
4	Accounting Certificate	5	4	9	6	3
5	Advertising/Public Rel Cert	2	1	3	0	1
6	Arch Drafting Tech Certificate	10	4	2	2	3
7	Bus Office Tech: WP Cert	3	8	6	5	3
8	Business Administration Cert	4	3	3	1	7
9	Comm Health Outreach Worker	0	0	3	3	1
10	Computer Aided Drafting Cert	32	17	11	15	15
11	Computer Applications Cert	9	7	7	3	3
12	Construction Management Cert	0	0	0	3	9
13	Criminal Justice Certificate	1	2	2	9	8
14	Early Child Ed: Spec Ed Cert	2	4	2	1	1
15	Early Childhood Education Cert	13	10	13	11	12
16	Environ Health and Sfty Mgmt	0	0	0	4	4
17	Fiber Optics	0	1	1	0	0
18	General Studies Certificate	11	13	43	41	30
19	Graphic & Communication Arts	3	6	7	11	13
20	Hotel Management	0	1	1	2	2
21	Hum. Serv. Case Management	1	2	5	6	7
22	Industrial Supervision Cert	1	0	0	0	0
23	Library Technology Cert	32	27	19	14	15
24	Marketing Certificate	0	1	1	0	2
25	Networking Technology	0	1	4	7	4
26	Photonics Technology	0	0	0	0	1
27	Public Administration Cert	0	1	0	0	0
28	Restaurant Management	1	2	3	3	2
29	Retail Management	6	2	4	5	2
30	Security/Loss Prevention Cert	2	1	0	2	0
31	Theatre Arts Certificate	4	1	1	0	0

CIHE DATA FORM 8
STUDENT HEADCOUNT BY UNDERGRADUATE MAJOR AND GRADUATE PROGRAM

	FALL TERM (YEAR)	4 YEARS AGO (FY2003)	3 YEARS AGO (FY2004)	2 YEARS AGO (FY2005)	1 YEAR AGO (FY2006)	CURRENT YEAR (FY2007)
32	Tourism Management	1	1	0	0	0
33	Travel & Tourism Certificate	1	0	0	0	0
34	Web Design and Developement	1	4	8	7	4
35	TOTAL	145	124	158	161	152

36	ASSOCIATE					
37	Accounting: Career	53	67	66	67	69
38	Accounting: Transfer	68	59	59	69	69
39	Architectural Design Tech	51	51	56	70	72
40	Aviation Maintenance Tech	1	2	2	0	2
41	Banking	4	5	2	3	5
42	Business Office Technology: Word Processing	1	0	0	0	0
43	Business Administration: Business Info Systems	0	0	0	3	12
44	Bus Office Tech: Admin Asst	29	33	36	28	26
45	Bus Office Tech: Legal	6	4	0	0	0
46	Bus Office Tech: Medical	4	1	0	0	0
47	Business Admin: Management	122	132	134	131	143
48	Business Admin: Public Admin	6	5	5	1	1
49	Business Admin: Transfer	91	102	105	111	120
50	Business Office Technology	1	0	0	0	0
51	Civil Engineering Tech	26	18	20	28	25
52	Computer Science Technology	157	129	138	117	98
53	Computer Systems Technology	1	4	1	0	0
54	COT: Engineering Science	0	0	14	21	25
55	COT: Technological Studies	7	5	1	4	3
56	Criminal Justice	42	7	8	1	0
57	Criminal Justice: Corrections	10	8	6	1	0
58	Criminal Justice: Enforcement		41	76	112	130
59	Criminal Justice: Transfer	59	74	33	4	2
60	Criminal Justice: Treatment	0	4	17	21	26

CIHE DATA FORM 8
STUDENT HEADCOUNT BY UNDERGRADUATE MAJOR AND GRADUATE PROGRAM

	FALL TERM (YEAR)	4 YEARS AGO (FY2003)	3 YEARS AGO (FY2004)	2 YEARS AGO (FY2005)	1 YEAR AGO (FY2006)	CURRENT YEAR (FY2007)
61	Drug & Alcohol Rehab Counselor	1	0	0	0	0
62	Early Childhood Education	137	143	156	146	170
63	Early Childhood: Special Ed	13	19	27	20	13
64	Electrical Engineering Tech	68	52	45	55	46
65	Engineering Science	6	8	0	0	0
66	Environmental Engineering Tech	22	20	28	26	29
67	Fire Tech & Administration	30	25	30	30	34
68	Food Service Management	11	2	1	0	0
69	General Studies	1141	1191	1210	1169	1206
70	Hosp.Mgmt: Casino Management	1	5	5	6	5
71	Hosp.Mgmt: Hotel Management	4	8	26	20	14
72	Hosp.Mgmt: Restaurant Manage.	10	15	23	19	19
73	Hosp.Mgmt: Tourism Management	6	6	0	0	0
74	Hospitality Management	1	1	0	0	0
75	Human Services	64	81	74	74	92
76	Industrial Supervision	1	0	0	0	0
77	Liberal Arts & Sciences	161	69	25	14	5
78	Manufacturing Engineering Tech	14	18	6	9	9
79	Marketing	20	20	24	24	17
80	Marketing: Transfer	16	19	25	25	26
81	Mechanical Engineering Tech	39	47	45	50	57
82	Montessori Teacher Education	0	0	0	4	6
83	Nuclear Engineering Tech	32	28	19	16	24
84	NURSING	120	128	151	162	160
85	Photonics Engineering Technology	27	26	24	18	23
86	Tech Studies: Electrical	1	1	1	2	5
87	Travel & Tourism	2	3	2	0	0
88	General Engineering Technology	13	15	13	17	16
89	Liberal Arts & Sciences	170	294	388	394	416
90						

CIHE DATA FORM 8
STUDENT HEADCOUNT BY UNDERGRADUATE MAJOR AND GRADUATE PROGRAM

FALL TERM (YEAR)			4 YEARS AGO (FY2003)	3 YEARS AGO (FY2004)	2 YEARS AGO (FY2005)	1 YEAR AGO (FY2006)	CURRENT YEAR (FY2007)
91		Undeclared	609	503	479	407	421
92		TOTAL	3479	3498	3606	3499	3641

UNDERGRADUATE

93		BACCALAUREATE					
116		TOTAL	0	0	0	0	0
117							
118		TOTAL UNDERGRADUATE	3624	3622	3764	3660	3793

CIHE DATA FORM 9
CREDIT HOURS GENERATED BY DEPARTMENT OR COMPARABLE ACADEMIC UNIT

			4 YEARS AGO (FY2003)	3 YEARS AGO (FY2004)	2 YEARS AGO (FY2005)	1 YEAR AGO (FY2006)	CURRENT YEAR (FY2007)
2		NAME OF DEPARTMENT OR COMPARABLE UNIT					
3		UNDERGRADUATE					
4		Business	387	389	383	366	376
5		Engineering Technologies	615	508	545	524	560
6		Humanities	928	965	1075	1114	1132
7		Math	624	686	714	730	785
8		Nursing	140	150	180	206	202
9		Science	379	389	407	430	429
10		Social Sciences	825	856	811	800	849
11							
12		TOTAL	3899	3943	4115	4171	4333

14		NAME OF DEPARTMENT OR COMPARABLE UNIT					
15		GRADUATE					
16							
17							
18							
19		TOTAL	0	0	0	0	0